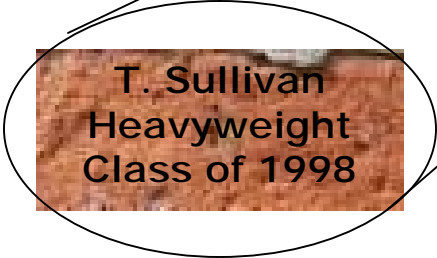




# ORCHARD LAKE ST. MARY'S CREW CAPITAL IMPROVEMENT FUND

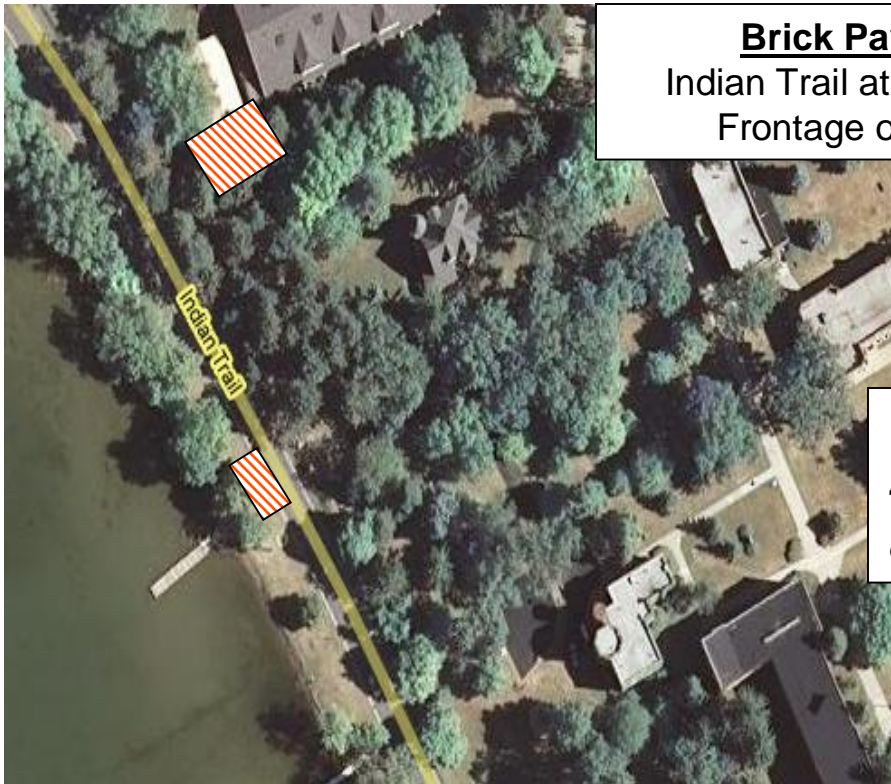
## Engraved Brick Pavers

OLSM Crew Booster Club is promoting an engraved paver fundraiser. All proceeds will go to the upgrade and improvement of team equipment and the OLSM Crew Endowment Fund.



### Future Needs:

- Heavyweight 8
- Boat Dock
- Transportation Fund



**Brick Paver Areas**  
Indian Trail at the boat dock.  
Frontage of Boat Barn

**Donation**  
4" x 8" \$200  
8" x 8" \$500

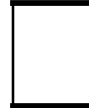
Make all checks payable to OLSM Crew Boosters, note: Paver Fundraiser



# ORCHARD LAKE ST. MARY'S CREW Paver Fundraiser



4" x 8" Paver, \$200.00  
3 lines, 20 characters per line.



8" x 8" Paver, \$500.00  
6 lines, 20 characters per line

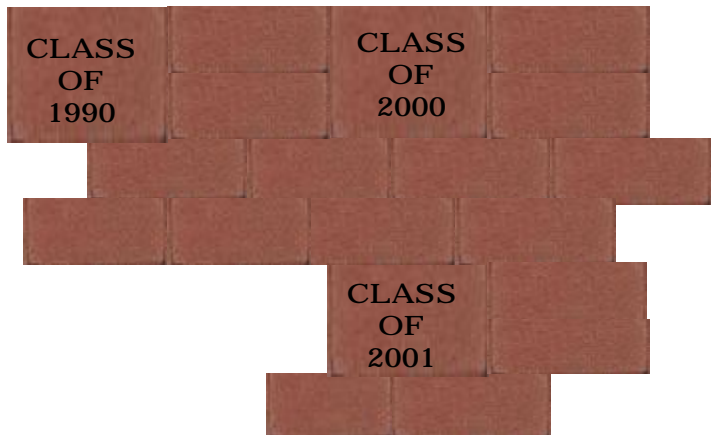
Line 1	
Line 2	
Line 3	
Line 4 <small>(8x8 only)</small>	
Line 5 <small>(8x8 only)</small>	
Line 6 <small>(8x8 only)</small>	

Graduating Class: \_\_\_\_\_

Please note: We will make every effort to place your brick near your class marker.

**ALUMNI CHALLENGE:** All crew alumni classes.

Purchasing an 8"x8" paver and represent your graduating class. We will lay the pavers in progressive order beginning at the boat dock, starting with the class of 1977. **DON'T BE THE ONLY CLASS NOT REPRESENTED.**



Mail completed form to:

OLSM Crew Booster Club  
3535 Indian Trail  
Orchard Lake, MI 48324  
Attn: Dan Whalen/John Ray

**Please make all donations payable to OLSM Crew Booster Club.**